

FLATLOCK CLADDING

DATA SHEET

Sharing the same profile design as the Shingle system, Flatlock offers a versatile wall cladding solution. The unique aesthetic created is a flush, flexible and thin façade.

The system can also be installed in reverse, creating deeper express lines; this is called Reversed Flatlock.

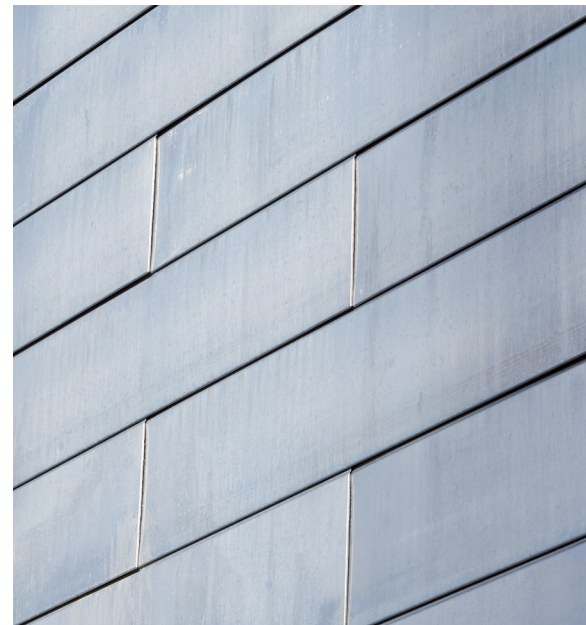
A highly decorative façade due to the many design options and fabrication flexibility. Suitable for residential or commercial projects.

Material Availability

KME Copper | VM Zinc | COR-TEN | Aluminium
COLORBOND® | COLORBOND® Ultra | ZINCALUME®
UniCote® | MagnaFlow® | UniCote® LUX

General Requirements & Install

- Flexible panel sizes 140mm – 540mm
- Up to 4000mm long panels (material dependent)
- Standard panel widths of 240mm, 340mm & 540mm (excl. zinc)
- Concealed fixing with approved clips and counter sunk screws
- 15mm construction grade substructure for wall cladding
- 17mm construction grade for substructure for roof cladding



Not to scale



ARCHITECTURAL
Roofing • Building Supplies

A: 1/13 De-Havilland Cres, Ballina NSW 2478

P: 02 6686 4884

E: sales@architecturalroofing.com.au

W: architecturalroofing.com.au